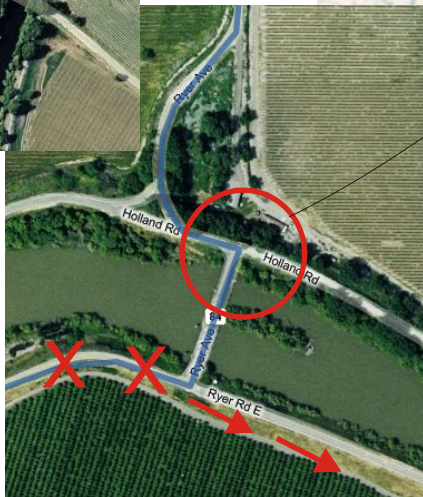


Sacramento to Snug Harbor

(Using bridge at north end of Ryer Island)

Traveling West on the I-80 Bus West/Capital City Fwy toward San Francisco, when you have crossed the Sacramento River make a right onto Jefferson Blvd in West Sacramento. Turn Left onto SR 84/Jefferson Blvd. Go 17.3 miles to Courtland Road, a "T" intersection. Turn Right. Continue 6 miles and the road will veer to the left and turn into Ryer Ave/Holland RD, even though you might not see a street name. This is still SR 84. Continue 1.9 miles to the bridge onto Ryer Island. **NOTE!** *Its faster to turn left when you get onto Ryer Island and go 7.5 miles to Snug Harbor Drive. The online mapping programs take you along SR 84 and 220, which is the slower route.*



After crossing the bridge onto Ryer Island, turn left for the fastest route to Snug Harbor

