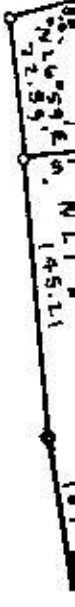


FROM DEEDS OF SOLANO COUNTY.



8.500

RYER ISLAND

S LOUGH



THIS PORTION OF MAP WAS MA
RECORDED IN THE OFFICIAL RECORD

This map has been examined for conformance with the requirements of Chapter 15 of Division 3 of the Business and Professions Code this 7th day of FEBRUARY, 1960

W. Jones
COUNTY SURVEYOR 2592

Filed for record this 7th day of Feb, 1960, at 10:30 AM in Book 7 of surveys at page 63, at the request of William Beinhauer

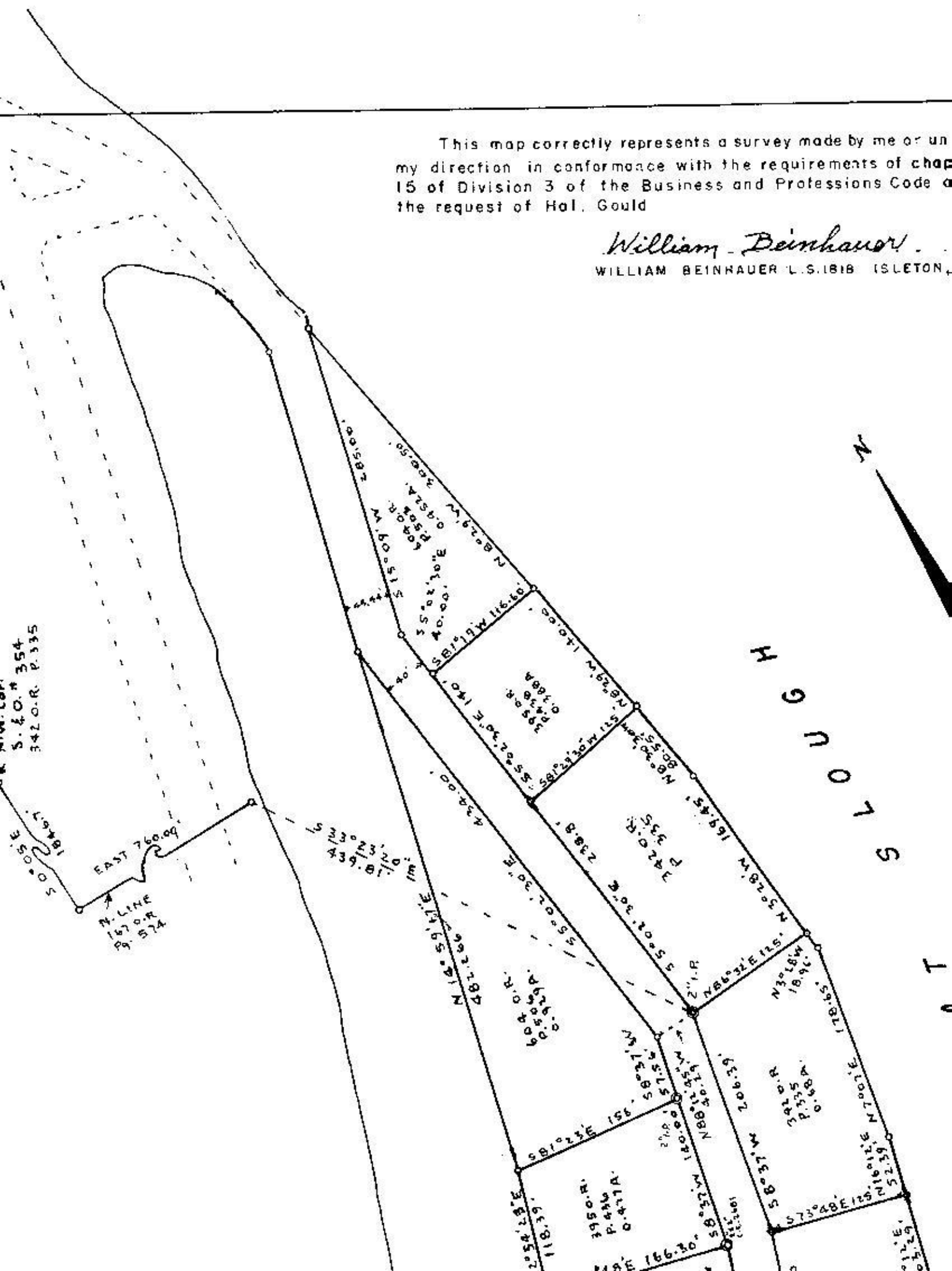
M. E. Buckmaster
COUNTY RECORDER
SOLANO COUNTY

RESURVEY OF S. & O. 544
PORTION OF SECS. 11 & 14 T. 4 N. R. 3 E. M. D. B. & M.
ADJACENT TO RYER ISLAND, SOLANO CO., CALIF.

SURVEYED FOR HAL GOULD et al
WILLIAM BEINHAUER L. S. 1818 ISLETON, CALIF.
OCT 1960 SCALE 1" = 100'

This map correctly represents a survey made by me or under my direction in conformance with the requirements of chapter 15 of Division 3 of the Business and Professions Code at the request of Hal. Gould

William Beinhauer
 WILLIAM BEINHAUER L.S. 1818 ISLETON,



RESURVEY OF S. 8. 0. 544
 PORTION OF SECS. 11 & 14 T. 4 N. R. 3 E. M. D. B. M.
 ADJACENT TO RYER ISLAND, SOLANO CO., CALIF.
 SURVEYED FOR HAL GOULD et al
 WILLIAM BEINHAUER L.S. 1818 ISLETON, CALIF.
 OCT. 1960 SCALE 1" = 100'

COUNTY RECORDER
 SOLANO COUNTY

Wm E. Beinbauer

Request of William Beinbauer

Filed for record this 7th day of Feb, 1961, at 6:30 AM in Book 1 of surveys at page 63 of the

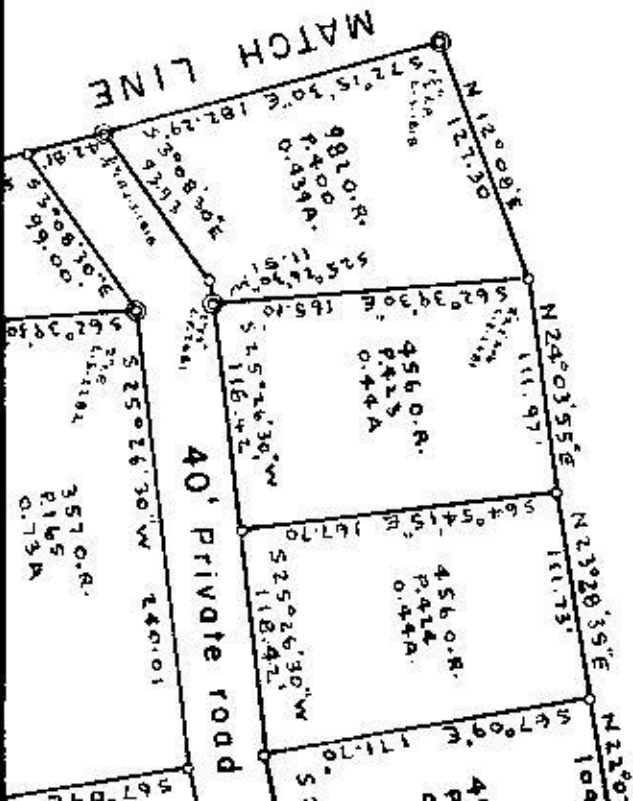
COUNTY SURVEYOR

2592

Wm E. Beinbauer

This map has been examined for conformance with the
 requirements of Chapter 15 of Division 3 of the Business
 Professions Code this 7th day of FEBRUARY, 1960

THIS PORTION OF MAP WAS MADE
 RECORDED IN THE OFFICIAL RECORD



RYE